

The Great Basin Desert



Location

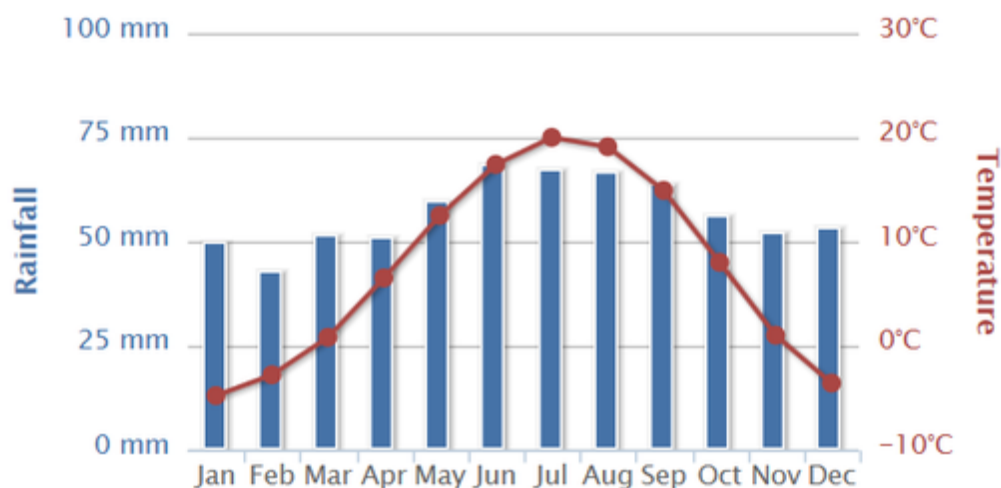
The Great Basin Desert is located in the west of America near California.



Size and type of desert

The Great Basin is approximately 190,000 square miles. It's the largest desert in the whole of the United States of America. Unlike the hot deserts of the Mojave, Chihuahuan and Sonoran the Great Basin is a cold desert.

Climate Information



The low humidity and minimal light pollution gives Great Basin National Park some of the darkest night skies.

The warmest month in the basin is July with 20 degrees and the coolest month in the basin is January with -5 degrees.

Plants and Animals



Animals that live in the Great Basin are:

- Sagebrush Vole (pictured above)
 - Porcupine
 - Bighorn sheep
 - Pigmy Rabbit

These are only some of the thousands of animals living in the Great Basin.

There are various different kind of plants but very few cactuses. Some of the plants are called:

- Big sagebrush
- Black brush
- Shadscale



Resources of the desert

Minerals are the greatest resource of the desert. A high percentage of America's gold, magnesite, barite and mercury.

People

At the moment there are no humans living in the Basin. People do sometimes travel to the desert to hunt for animals such as small deer and rabbit.

Previously people did live in the desert and national park from the fur trappers of the 19th century all the way back to the Pealo-Indians.

